

## KNIFE

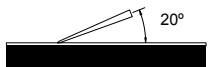
### Suggested sharpener



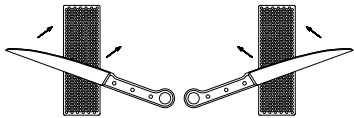
**Recommended DMT® Grit**  
**COARSE** - restore a dull edge  
**FINE** - maintain a razor edge  
**EXTRA-FINE** - refine a razor edge



- 1 Establish same angle as knife bevel with whetstone. 20° for most knives.



- 2 Stroke away from the body, alternating on each side of the knife.



Tip: Lighter strokes will produce a finer edge. Resting blade on two stacked quarters approximates a 20° angle.

## ROUTER BITS

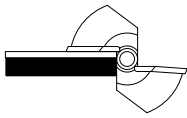
### Suggested sharpener



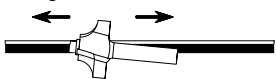
**Recommended DMT® Grit**  
**COARSE** - restore a dull edge  
**FINE** - maintain a razor edge



- 1 Always sharpen the flat side, never the profile.



- 2 Glide the bit with light pressure along the stone. Repeat same number of strokes on other wing.



Tip: Sharpen bits on DMT® stone to save time and money - extend tool life.

## FLATTENING WATERSTONES

### Suggested sharpener

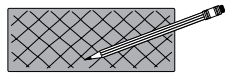
Dia-Sharp® 8" DuoSharp® 8" or 250mm (10")



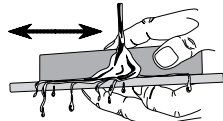
**Recommended DMT® Grit**  
**EXTRA EXTRA COARSE** - remove damaged areas  
**EXTRA COARSE** - restore and maintain surface



- 1 Mark waterstone surface with pencil.



- 2 Rub diamond stone against waterstone under running water until pencil lines are gone.



Tip: Use light pressure to finish up and give a smooth surface.

## CHISEL / PLANE

### Suggested sharpener

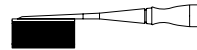
Bench Stone 6" DuoSharp® 5" or 250mm (10")



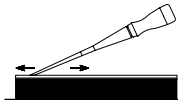
**Recommended DMT® Grit**  
**XC or COARSE** - remove damaged edge or restore a dull edge  
**FINE** - maintain a razor edge  
**EXTRA-FINE** - refine a razor edge



- 1 On new or damaged chisels, flatten the back first, working to finer grits. This step is not required for regular sharpening.



- 2 Cradle tool in your fingers or use a jig to keep the bevel flat on stone.



Tip: Finish with one light stroke on back of the chisel using fine or extra-fine.

## CARVING & TURNING

### Suggested sharpener

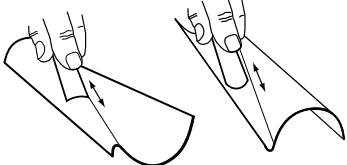
Diamond WAVE™ Honing Cone



**Recommended DMT® Grit**  
**FINE** - maintain a razor edge  
**EXTRA FINE** - refine a razor edge



- 1 Match the radius of the tool to the radius of the Wave.



- 2 Use short (one inch) back and forth strokes with light force to sharpen the bevel.

Tip: Finish with lighter pressure to ensure a finer edge finish.

## SMALL & POINTED TOOLS

### Suggested sharpener

Dia-Sharp® DuoSharp® plus



**Recommended DMT® Grit**  
**COARSE** - restore a dull edge  
**FINE** - maintain a razor edge  
**EXTRA-FINE** - refine a razor edge



Tip: Use continuous diamond sharpening products to avoid having small and pointed tools snag during sharpening.

Make your job or hobby easier, safer and quicker by keeping your tools sharp whether at home or on the job, for pleasure or for work, DMT® keeps you sharp!



**THE LEADER IN DIAMOND SHARPENING™**  
 1-800-666-4368 [www.dmtsharp.com](http://www.dmtsharp.com)

**DIAMOND MACHINING TECHNOLOGY**  
 85 Hayes Memorial Drive, Marlborough, MA 01752-1892 USA



# DIAMOND Sharpeners Application Guide



# WOODWORKING





# DIAMOND SHARPENER SELECTION CHART

Match the item you need sharpened with the DMT® model sharpener and proper grit.



## DIAMOND Sharpeners

Diamond sharpening with DMT® products provides an edge like no other.

Known for superior quality, versatility and ease of use, DMT® Diamond Sharpening Products are:

♦ **Fast** - Sharpens in a fraction of the time required by other methods. Only light pressure needed, let the diamonds do the work.

♦ **Easy** - Just a few easy strokes on your own or use one of our guided sharpening systems! Sharpens even the newest, toughest metals, carbides and ceramics.

♦ **Clean** - No messy oils or clean up - use only water if needed.

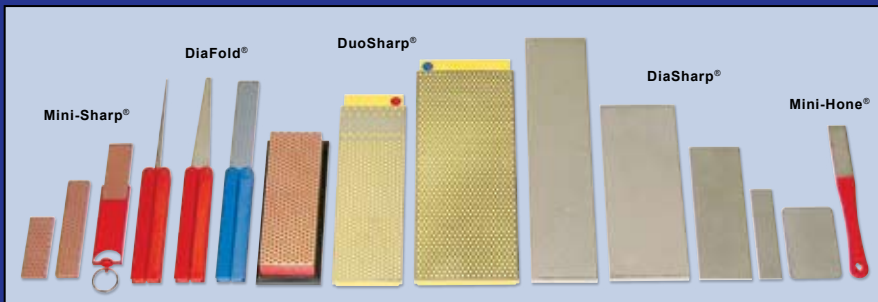
♦ **Durable** - Longest lasting and highest quality sharpeners on the market! Will not hollow or groove over the life of the product.

♦ **Versatile** - Widest range of product available on the market; Extra-Extra Coarse (120 micron) grit through Extra-Extra Fine (3 micron) grit, in portable, folding styles through large bench stones. Also available are many specialty products including kitchen steels, guided sharpening and pastes. We make it all!

1.800.666.4368  
www.dmtsharp.com

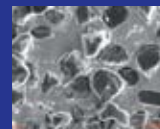
WOODWORKING TOOLS	SHARPENER TYPE										GRIT OPTIONS					
	DuoSharp® Benchstones	DiaSharp® Continuous Surface	DiaFold® Folding Whetstones	Diamond Whetstone™	Diamond Honing Cones	Flexi-Sharp® Sheets	Diamond Flat File	Extra-Extra Coarse	Extra Coarse	Coarse	Fine	Extra Fine	Extra-Extra Fine	Compound	Compound	
Adze	✓	✓	✓	✓	✓			◆	◆	◆	◆					
Auger Bit		✓	✓		✓	✓					◆	◆	◆			
Awl		✓									◆	◆				
Carbide Tipped Blade		✓	✓			✓					◆	◆				
Chisel, Japanese Bimetallic	✓	✓		✓							◆	◆	◆	◆	◆	
Chisel, Mortising	✓	✓		✓							◆	◆	◆	◆	◆	
Chisel, Paring	✓			✓							◆	◆	◆	◆	◆	
Draw Knife			✓	✓							◆	◆	◆	◆	◆	
Edge and Trim cutters	✓		✓								◆	◆	◆	◆	◆	
Flat Boring Bit			✓			✓					◆	◆				
Forstner Bit		✓	✓	✓		✓					◆	◆	◆			
Froe	✓	✓					◆	◆			◆	◆	◆			
Gouge, Carving		✓		✓		✓					◆	◆	◆	◆	◆	
Gouge, In-cannel				✓		✓					◆	◆	◆	◆	◆	
Gouge, Out-cannel		✓		✓		✓					◆	◆	◆	◆	◆	
Knife, Marking	✓	✓	✓	✓							◆	◆	◆	◆	◆	
Knife, Pocket	✓	✓	✓	✓							◆	◆	◆	◆	◆	
Knife, Utility	✓		✓								◆	◆	◆			
Plane Iron	✓	✓		✓							◆	◆	◆	◆	◆	
Ring and Hook Tools				✓							◆	◆	◆	◆	◆	
Router Bit, Carbide	✓		✓			✓					◆	◆	◆			
Scraper	✓	✓		✓							◆	◆	◆			
Shaper Cutters	✓			✓							◆	◆	◆			
Skews	✓			✓							◆	◆	◆			
Slick	✓			✓			◆	◆			◆	◆	◆			
Spoke Shave	✓			✓							◆	◆	◆	◆	◆	
Veiner		✓		✓		✓					◆	◆	◆			
Veneer Knife Blades	✓			✓							◆	◆	◆	◆	◆	

- ◆ **Extreme repair of a very damaged edge.**  
SILVER (XX) Diamond • Extra-Extra Coarse  
• 120 mesh, 120 micron
  - ◆ **Fix and restore a damaged edge.**  
BLACK (X) Diamond • Extra Coarse  
• 220 mesh, 60 micron
  - ◆ **Quickly sharpen a neglected edge.**  
BLUE (C) Diamond • Coarse  
• 325 mesh, 45 micron
  - ◆ **Put a keen edge on a maintained tool.**  
RED (F) Diamond • Fine  
• 600 mesh, 25 micron
  - ◆ **Polish and refine to a razor edge.**  
GREEN (E) Diamond • Extra Fine  
• 1200 mesh, 9 micron
  - ◆ **Extra fine polished and refined edge.**  
TAN (EE) Diamond • Extra-Extra Fine  
• 8000 mesh, 3 micron
  - ◆ **Scratch removal edge refinement.**  
COPPER • Diamond Paste Compound  
• 4000 mesh, 6 micron
  - ◆ **Glossy polish edge refinement.**  
YELLOW • Diamond Paste Compound  
• 8000 mesh, 3 micron
  - ◆ **Mirror polish edge refinement.**  
GRAY • Diamond Paste Compound  
• 15000 mesh, 1 micron
- If you need help with your selection, call us at 1-800-666-4368 or visit our website [www.dmtsharp.com](http://www.dmtsharp.com)



**The DMT® difference:** DMT® is committed to use only the finest quality micronized, monocrystalline diamonds in all its products - both interrupted and continuous surface, the best in the business. These, along with the use of engineered resin substrates and leading edge technology, give DMT® products a tremendous competitive advantage for long-life, easy, quick sharpening and **SUPERIOR VALUE.**

DMT's diamond size and concentration



Competitor's diamond size and concentration

