

KNIFE

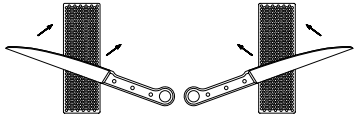
DuoSharp® plus **Suggested sharpener**



Recommended DMT® Grit
COARSE - restore a dull edge
FINE - maintain a razor edge
EXTRA-FINE - refine a razor edge



- 1 Establish same angle as knife bevel with whetstone. 20° for most knives.
- 2 Stroke away from the body, alternating on each side of the knife.



Tip: Lighter strokes will produce a finer edge. Resting blade on two stacked quarters approximates a 20° angle.

SERRATED KNIFE

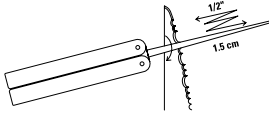
Suggested sharpener



Recommended DMT® Grit
COARSE - restore a dull edge
FINE - maintain a razor edge
EXTRA-FINE - refine a razor edge



- 1 Match diameter of cone to the size of the serration or hook.
- 2 Use a few short, very light, back and forth strokes on each serration.



Tip: Wipe small burr off opposite side of edge with one smooth, light stroke.

CHISEL / PLANE

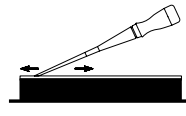
Suggested sharpener



Recommended DMT® Grit
XC or COARSE - remove damaged edge or restore a dull edge
FINE - maintain a razor edge
EXTRA-FINE - refine a razor edge



- 1 On new or damaged chisels, flatten the back first, working to finer grits. This step is not required for regular sharpening.
- 2 Cradle tool in your fingers or use a jig to keep the bevel flat on stone.



Tip: Finish with one light stroke on back of the chisel using fine or extra-fine.

DMT®

DIAMOND Sharpeners Application Guide

SCISSORS

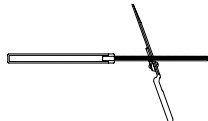
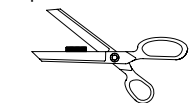
Suggested sharpener



Recommended DMT® Grit
COARSE - restore a dull edge
FINE - maintain a razor edge



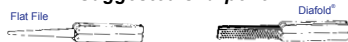
- 1 Align sharpener flush with the bright bevel.
- 2 Stroke smoothly towards outside of scissors. Repeat on the other half.



Tip: Small burr on sliding surface can be wiped off with a light stroke.

PRUNERS

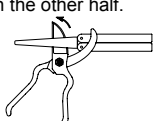
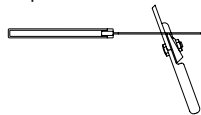
Suggested sharpener



Recommended DMT® Grit
COARSE - restore a dull edge
FINE - maintain a razor edge



- 1 Align sharpener flush with the bright bevel.
- 2 Stroke smoothly towards outside of scissors. Repeat on the other half.



Tip: Small burr on sliding surface can be wiped off with a light stroke.

SMALL & POINTED TOOLS

Suggested sharpener



Recommended DMT® Grit
COARSE - restore a dull edge
FINE - maintain a razor edge
EXTRA-FINE - refine a razor edge



Tip: Use continuous diamond sharpening products to avoid having small and pointed tools snag during sharpening.

Make your job or hobby easier, safer and quicker by keeping your tools sharp whether at home or on the job, for pleasure or for work, DMT® keeps you sharp!

THE LEADER IN DIAMOND SHARPENING™

1-800-666-4368 www.dmtsharp.com

DIAMOND MACHINING TECHNOLOGY
 85 Hayes Memorial Drive, Marlborough, MA 01752-1892 USA



DMT® - The worldwide leader, innovator and manufacturer of manual diamond sharpening technology for people who depend on high performance edges.

PROUDLY MADE IN
 USA



DIAMOND Sharpeners

Diamond sharpening with DMT® products provides an edge like no other.

Known for superior quality, versatility and ease of use, DMT® Diamond Sharpening Products are:

◆ **Fast** - Sharpens in a fraction of the time required by other methods. Only light pressure needed, let the diamonds do the work.

◆ **Easy** - Just a few easy strokes on your own or use one of our guided sharpening systems! Sharpens even the newest, toughest metals, carbides and ceramics.

◆ **Clean** - No messy oils or clean up - use only water if needed.

◆ **Durable** - Longest lasting and highest quality sharpeners on the market! Will not hollow or groove over the life of the product.

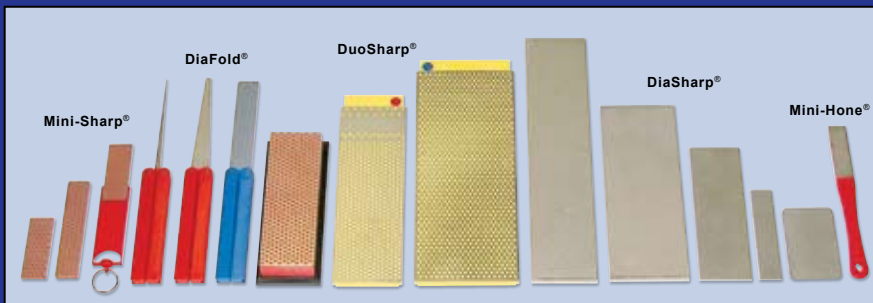
◆ **Versatile** - Widest range of product available on the market; Extra-Extra Coarse (120 micron) grit through Extra-Extra Fine (3 micron) grit, in portable, folding styles through large bench stones. Also available are many specialty products including kitchen steels, guided sharpening and pastes. We make it all!

1.800.666.4368
www.dmtsharp.com

DIAMOND SHARPENER SELECTION CHART

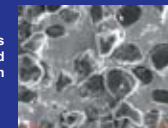
Match the item you need sharpened with the DMT® model sharpener and proper grit.

GENERAL HOUSEHOLD ITEMS	SHARPENER TYPE										GRIT OPTIONS				
	DuoSharp®	Dia-Sharp®	DiaFold®	Diamond Whetstone™	Diamond Chain Saw File	Diamond Flat File	Serrated Steel™	Crystal Knife Sharpener	Extra Coarse	Fine	Extra Fine	DMT SHARPENING GRITS			
China and Crystal							✓		◆			◆	Extreme repair of a very damaged edge.		
Food Processor Blades			✓		✓				◆	◆	◆	◆	SILVER (XX) Diamond • Extra-Extra Coarse • 120 mesh, 120 micron		
Knife, Bread	✓	✓	✓	✓		✓	✓		◆	◆	◆	◆	Fix and restore a damaged edge.		
Knife, Chef's	✓	✓		✓		✓			◆	◆	◆	◆	BLACK (X) Diamond • Extra Coarse • 220 mesh, 60 micron		
Knife, Cleaver	✓	✓						◆	◆	◆		◆	Quickly sharpen a neglected edge.		
Knife, Hobby		✓	✓		✓				◆	◆	◆	◆	BLUE (C) Diamond • Coarse • 325 mesh, 45 micron		
Knife, Hunting	✓	✓	✓	✓		✓		◆	◆	◆	◆	◆	Put a keen edge on a maintained tool.		
Knife, Paring			✓	✓		✓			◆	◆	◆	◆	RED (F) Diamond • Fine • 600 mesh, 25 micron		
Knife, Pocket			✓	✓					◆	◆	◆	◆	Polish and refine to a razor edge.		
Knife, Serrated				✓		✓	✓		◆	◆	◆	◆	GREEN (E) Diamond • Extra Fine • 1200 mesh, 9 micron		
Knife, Utility	✓	✓	✓		✓			◆	◆	◆		◆	Extra fine polished and refined edge.		
Pruners, Anvil				✓	✓		✓		◆	◆	◆	◆	TAN (EE) Diamond • Extra-Extra Fine • 8000 mesh, 3 micron		
Pruners, Bypass				✓	✓		✓		◆	◆	◆		If you need help with your selection, call us at 1-800-666-4368 or visit our website www.dmtsharp.com		
Putty Knives			✓						◆	◆	◆		©2008-2009 DMT®		
Scissors			✓		✓				◆	◆	◆				
Screw Drivers			✓		✓				◆	◆	◆				
Shears, Cloth			✓		✓		✓		◆	◆	◆				
Shears, Grass			✓		✓			◆	◆	◆	◆				
Shears, Metal			✓	✓	✓		✓	◆	◆	◆					
Shears, Poultry			✓		✓		✓	◆	◆	◆	◆				
Tin Snips			✓	✓	✓		✓	◆	◆	◆					
Tweezers	✓	✓		✓					◆	◆	◆				
Wire Snips			✓	✓	✓		✓	◆	◆	◆					



The DMT® difference: DMT® is committed to use only the finest quality micronized, monocrystalline diamonds in all its products - both interrupted and continuous surface, the best in the business. These, along with the use of engineered resin substrates and leading edge technology, give DMT® products a tremendous competitive advantage for long-life, easy, quick sharpening and **SUPERIOR VALUE**.

DMT's diamond size and concentration



Competitor's diamond size and concentration

