

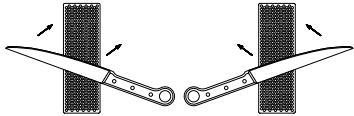
KNIFE

Suggested sharpener
DuoSharp® plus Bench Stone

Recommended DMT® Grit
COARSE - restore a dull edge
FINE - maintain a razor edge
EXTRA-FINE - refine a razor edge



- 1 Establish same angle as knife bevel with whetstone. 20° for most knives.
- 2 Stroke away from the body, alternating on each side of the knife.



Tip: Lighter strokes will produce a finer edge. Resting blade on two stacked quarters approximates a 20° angle.

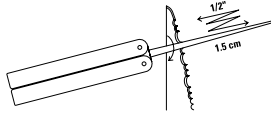
SERRATED KNIFE

Suggested sharpener
Serrated Knife Sharpener

Recommended DMT® Grit
COARSE - restore a dull edge
FINE - maintain a razor edge
EXTRA-FINE - refine a razor edge



- 1 Match diameter of cone to the size of the serration or hook.
- 2 Use a few short, very light, back and forth strokes on each serration.



Tip: Wipe small burr off opposite side of edge with one smooth, light stroke.

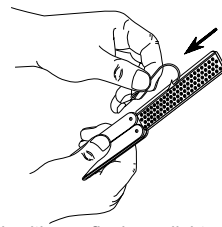
FISH HOOKS

Suggested sharpener
Mini-Sharp® Angler Diafold®

Recommended DMT® Grit
COARSE - restore a dull hook
FINE - maintain a razor hook



- 1 Hold hook securely and pull hook forward through groove.
- 2 Use light pressure.



Tip: Finish with one final very light stroke.

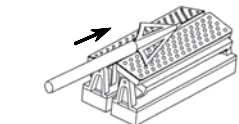
BROADHEADS

Suggested sharpener
Diamond Broadhead® Sharpener (Fine grit only) Dia-Sharp®

Recommended DMT® Grit
FINE - maintain a razor edge
EXTRA-FINE - refine a razor edge
EXTRA EXTRA-FINE - polish an edge



- 1 Adjust tables for 2, 3 or 4 blade broadheads.
- 2 Separate stones to miss arrow tip if needed.



Tip: Sharpen blades pushing broadhead forward only.

SKI & SNOWBOARD EDGES

Suggested sharpener
Burr Doctor® 4" Diamond Whetstone™

Recommended DMT® Grit
XXC & XCOARSE - remove damaged edge or restore an edge
COARSE - restore a dull edge
FINE - maintain a razor edge



- 1 Align length of stone with side of ski or snowboard.
- 2 Lightly hone away scratches and burrs. File both sides and bottom edges.

Tip: Use hot water or wax solvent to remove wax from diamond whetstone.

SMALL & POINTED TOOLS

Suggested sharpener
Dia-Sharp® DuoSharp® plus

Recommended DMT® Grit
COARSE - restore a dull edge
FINE - maintain a razor edge
EXTRA-FINE - refine a razor edge



Tip: Use continuous diamond sharpening products to avoid having small and pointed tools snag during sharpening.

Make your job or hobby easier, safer and quicker by keeping your tools sharp whether at home or on the job, for pleasure or for work, DMT® keeps you sharp!



THE LEADER IN DIAMOND SHARPENING™
1-800-666-4368 www.dmtsharp.com

DIAMOND MACHINING TECHNOLOGY
85 Hayes Memorial Drive, Marlborough, MA 01752-1892 USA



DIAMOND Sharpeners Application Guide



OUTDOOR SPORTS





DIAMOND SHARPENERS FOR OUTDOOR SPORTS SELECTION CHART

Match the item you need sharpened with the DMT® model sharpener and proper grit.



DIAMOND Sharpeners

Diamond sharpening with DMT® products provides an edge like no other.

Known for superior quality, versatility and ease of use, DMT® Diamond Sharpening Products are:

♦ **Fast** - Sharpens in a fraction of the time required by other methods. Only light pressure needed, let the diamonds do the work.

♦ **Easy** - Just a few easy strokes on your own or use one of our guided sharpening systems! Sharpens even the newest, toughest metals, carbides and ceramics.

♦ **Clean** - No messy oils or clean up - use only water if needed.

♦ **Durable** - Longest lasting and highest quality sharpeners on the market! Will not hollow or groove over the life of the product.

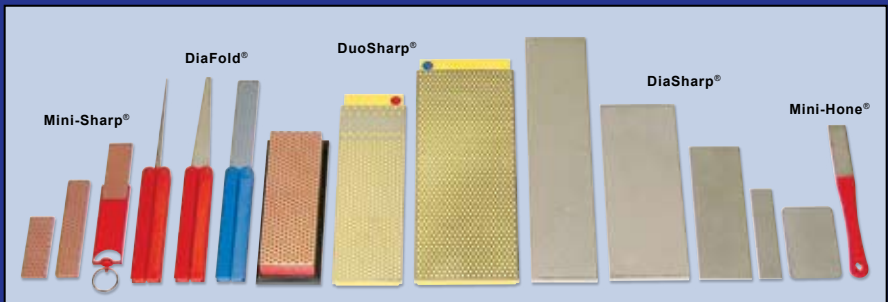
♦ **Versatile** - Widest range of product available on the market; Extra-Extra Coarse (120 micron) grit through Extra-Extra Fine (3 micron) grit, in portable, folding styles through large bench stones. Also available are many specialty products including kitchen steels, guided sharpening and pastes. We make it all!

1.800.666.4368
www.dmtsharp.com

SPORTS	SHARPENER TYPE										GRIT OPTIONS				
	DuoSharp® Benchstones	DiaSharp® Continuous Surface	DiaFold® Folding Whetstones™	Diamond Whetstone™	Diamond Chain Saw File	Aligner™ Guided Sharpening	Pocket Models	Diamond Flat File	Serrated Honing Cones	Diamond Broadhead™	Extra-Extra Coarse	Coarse	Fine	Extra Fine	Extra-Extra Fine
OUTDOOR SPORTS															
Axes	✓	✓				✓				◆	◆	◆			
Broadheads	✓	✓						✓					◆	◆	◆
Fish Hooks			✓								◆	◆	◆		
Game Shears			✓			✓					◆	◆	◆	◆	◆
Gut Hook			✓	✓				✓	✓		◆	◆	◆	◆	◆
Hatchet	✓	✓	✓	✓						◆	◆	◆	◆	◆	◆
Knife - Fillet	✓	✓	✓	✓		✓	✓	✓			◆	◆	◆	◆	◆
Knife - General	✓	✓	✓	✓		✓	✓	✓			◆	◆	◆	◆	◆
Knife - Serrated					✓	✓		✓	✓		◆	◆	◆	◆	◆
Knife - Skinning	✓	✓	✓	✓		✓	✓				◆	◆	◆	◆	◆
Machete	✓	✓	✓								◆	◆	◆	◆	◆
Multi-Tool	✓	✓	✓	✓	✓	✓	✓	✓	✓		◆	◆	◆	◆	◆
Shovels			✓							◆	◆	◆	◆	◆	◆
WINTER SPORTS															
Crampon			✓	✓		✓	✓	✓			◆	◆	◆	◆	◆
Figure Skate sides							✓				◆	◆	◆	◆	◆
Hockey Skate sides							✓				◆	◆	◆	◆	◆
Ice Auger			✓	✓			✓				◆	◆	◆	◆	◆
Ice Boat runners	✓	✓									◆	◆	◆	◆	◆
Ice Pick			✓	✓			✓				◆	◆	◆	◆	◆
Pitons	✓	✓	✓	✓	✓						◆	◆	◆	◆	◆
Ski Edges							✓				◆	◆	◆	◆	◆
Snowboard Edges							✓				◆	◆	◆	◆	◆
Speed Skates	✓	✓					✓				◆	◆	◆	◆	◆

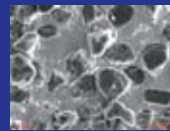
- ◆ Extreme repair of a very damaged edge.
SILVER (XX) Diamond • Extra-Extra Coarse
• 120 mesh, 120 micron
- ◆ Fix and restore a damaged edge.
BLACK (X) Diamond • Extra Coarse
• 220 mesh, 60 micron
- ◆ Quickly sharpen a neglected edge.
BLUE (C) Diamond • Coarse
• 325 mesh, 45 micron
- ◆ Put a keen edge on a maintained tool.
RED (F) Diamond • Fine
• 600 mesh, 25 micron
- ◆ Polish and refine to a razor edge.
GREEN (E) Diamond • Extra Fine
• 1200 mesh, 9 micron
- ◆ Extra fine polished and refined edge.
TAN (EE) Diamond • Extra-Extra Fine
• 8000 mesh, 3 micron

If you need help with your selection, call us at 1-800-666-4368 or visit our website www.dmtsharp.com



The DMT® difference: DMT® is committed to use only the finest quality micronized, monocrystalline diamonds in all its products - both interrupted and continuous surface, the best in the business. These, along with the use of engineered resin substrates and leading edge technology, give DMT® products a tremendous competitive advantage for long-life, easy, quick sharpening and **SUPERIOR VALUE.**

DMT's diamond size and concentration



Competitor's diamond size and concentration

